



# LIVESTOCK PRODUCTS AUSTRALIA

EMBARGO: 11:30AM (CANBERRA TIME) TUES 12 FEB 2002

## DECEMBER QTR KEY FIGURES

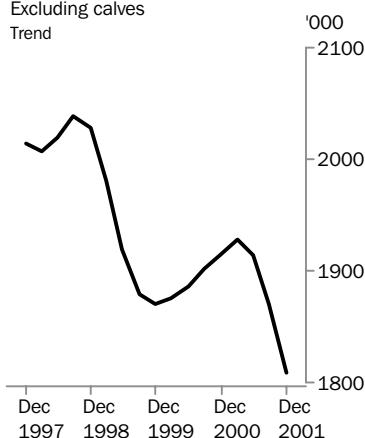
TREND ESTIMATES	Dec Qtr 2000 '000	Sep Qtr 2001 '000	Dec Qtr 2001 '000
<b>Number slaughtered</b>			
Cattle	1 913.5	1 870.2	1 808.0
Calves	258.1	236.8	224.3
Sheep	4 128.8	3 920.3	3 713.3
Lambs	4 688.6	4 340.6	4 301.0
Pigs	1 247.0	1 303.1	1 326.3
Chickens	100 553.9	98 346.0	98 524.9
<b>Meat produced</b>			
Beef	504 309	494 300	477 076
Veal	8 479	7 520	7 209
Mutton	86 494	81 354	77 575
Lamb	92 109	85 576	84 901
Pig meat	90 596	95 433	97 059
Chicken meat	154 851	157 917	160 393
Wool receivals	149 461	133 985	124 839
<b>Whole milk intake by factories</b>			
	Sep Qtr 2000 ML	Jun Qtr 2001 ML	Sep Qtr 2001 ML
	2 691	2 701	2 769

## DECEMBER QTR KEY POINTS

### TREND ESTIMATES

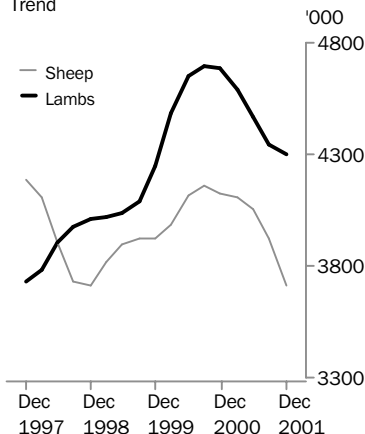
- The trend estimate for the number of cattle slaughtered in December quarter 2001 fell by 3% to 1.8 million, the lowest quarterly estimate since December quarter 1996.
- The trend estimate for mutton production fell by 5% to 77,600 tonnes in December quarter 2001, reaching its lowest level since September quarter 1998.
- The trend estimate for pig meat production in December quarter 2001 increased by 2% to a record 97,100 tonnes.

### Cattle slaughterings

Excluding calves  
Trend

### Sheep and lamb slaughterings

Trend



- For further information about these and related statistics, contact Gordon Cameron on Hobart 03 6222 5939, or the National Information and Referral Service on 1300 135 070.

# NOTES

## FORTHCOMING ISSUES

*ISSUE (Quarter)*

*RELEASE DATE*

March 2002

10 May 2002

June 2002

12 August 2002



## CHANGES IN THIS ISSUE

From September quarter 2000 onwards, interstate transfers of UHT milk have been included in their State of destination. Prior to this, data for interstate transfers of UHT milk were not available and were not included in the tables, which were footnoted accordingly. The general effect of this change has been to increase market milk sales by about 5%. For further information, contact the ABS.

## FORTHCOMING CHANGES

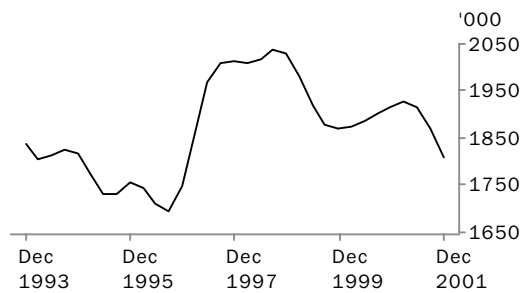
There are no forthcoming changes.



Dennis Trewin  
Australian Statistician

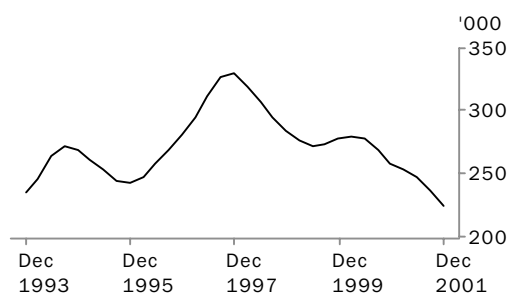
# LIVESTOCK SLAUGHTERED: Trend

## CATTLE (EXCLUDING CALVES)



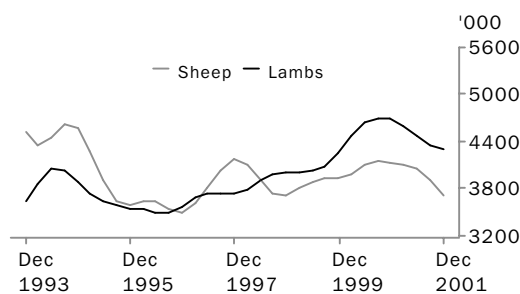
Reduced export demand saw the trend estimate for the number of cattle slaughtered in December quarter 2001 fall by 3% to 1.8 million.

## CALVES



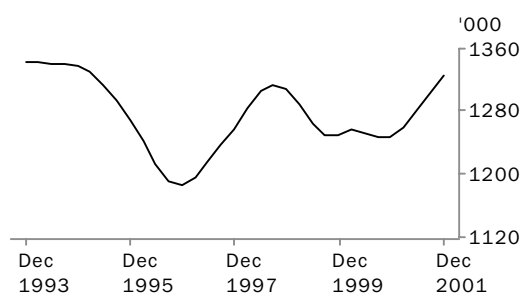
The trend estimate for the number of calves slaughtered in December quarter 2001 was 224,000, a fall of 5% on the previous quarter continuing the downward trend in calf slaughterings evident since December quarter 1997.

## SHEEP AND LAMBS



The trend estimate for sheep slaughtered in December quarter 2001 was 3.7 million, down by 5% on the previous quarter due to competing demands from live exporters and re-stockers. The trend estimate for the number of lambs slaughtered fell by 1% to 4.3 million.

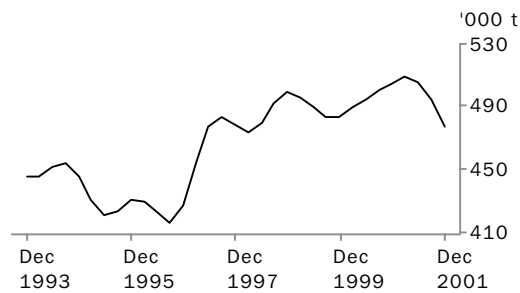
## PIGS



The trend estimate for the number of pigs slaughtered in December quarter 2001 increased by 2% to 1.3 million.

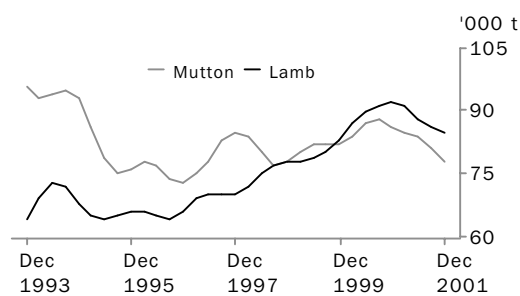
# MEAT PRODUCTION: Trend

## BEEF



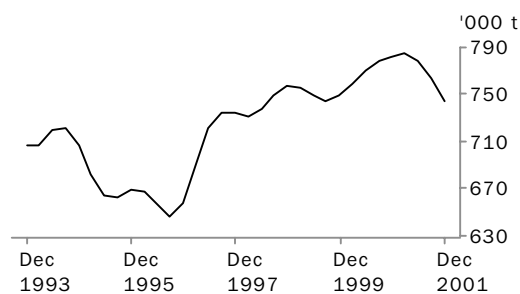
The trend estimate for beef production fell by 3% to 477,000 tonnes in December quarter 2001. Export demand fell for the quarter with the filling of the US beef quota and the repercussions of BSE reports in Japan.

## MUTTON AND LAMB



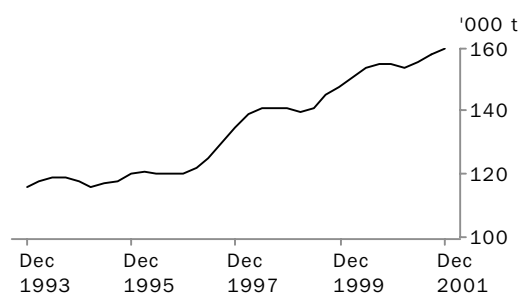
The trend estimate for mutton production fell by 5% to 77,600 tonnes in December quarter 2001. The trend estimate for lamb production in December quarter fell by 1% to 84,900 tonnes.

## TOTAL RED MEAT



The trend estimate for total red meat production fell by 3% to 744,000 tonnes in December quarter 2001 with decreases in all categories, except pig meat.

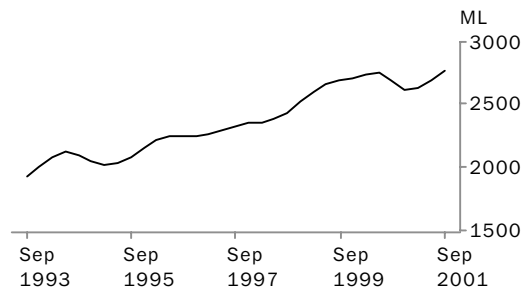
## CHICKEN MEAT



The trend estimate for chicken meat production in December quarter 2001 increased by 2% to a record 160,000 tonnes.

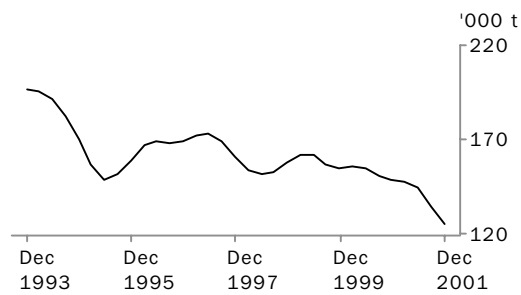
# LIVESTOCK PRODUCTS: Trend

WHOLE MILK INTAKE BY FACTORIES



The trend estimate for whole milk intake by factories increased by 3% to 2.8 billion litres in September quarter 2001.

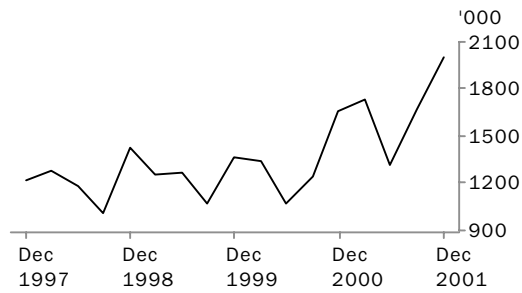
BROKERS AND DEALERS RECEIVALS OF TAXABLE WOOL



The trend estimate for wool receivals by brokers and dealers fell by 7% in December quarter 2001 to 125,000 tonnes, as lower prices for fine wool resulting from a fall in demand from traditional buyers and increased competition from synthetic fibres impacted on sales.

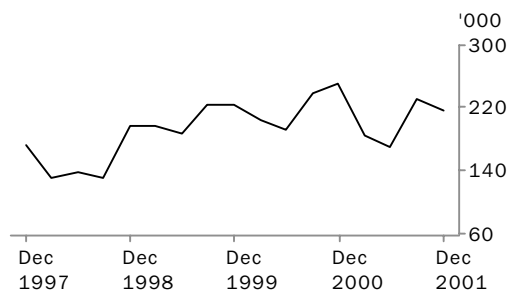
# LIVESTOCK EXPORTS: Original

EXPORTS OF LIVE SHEEP



Live sheep exports, with a gross value of \$121 million, increased by 20% to 2.0 million in the December quarter 2001 due to strong demand strengthened by Ramadan-related sales to Middle Eastern markets.

EXPORTS OF LIVE CATTLE



Live cattle exports fell by 6% in December quarter 2001 to 216,000, with a gross value of \$155 million. Strong growth in Middle Eastern markets was more than offset by a decline in exports to the Philippines.

## LIVESTOCK SLAUGHTERED, Australia(a): All Series

Quarter	Bulls, bullocks and steers '000	Cows and heifers '000	Total cattle (excluding calves) '000	Calves '000	Sheep '000	Lambs '000	Pigs '000	Chickens '000
ORIGINAL								
<b>2000</b>								
September	1 010.6	930.9	1 941.5	522.9	3 830.7	4 721.9	1 238.0	100 165.6
December	1 009.5	872.1	1 881.6	168.0	4 294.4	4 738.5	1 239.6	102 953.7
<b>2001</b>								
March	951.8	890.0	1 841.9	119.7	4 605.0	4 570.6	1 217.9	99 139.6
June	1 012.1	982.4	1 994.5	226.9	3 794.3	4 473.1	1 320.8	96 609.7
September	1 059.3	889.9	1 949.2	459.8	3 461.4	4 087.1	1 311.2	96 828.0
December	951.8	759.0	1 710.8	149.5	3 863.4	4 669.6	1 313.4	101 765.1
SEASONALLY ADJUSTED								
<b>2000</b>								
September	987.1	925.3	1 912.4	266.4	4 356.3	4 627.4	1 231.6	101 605.4
December	987.8	930.8	1 918.6	249.8	3 983.0	4 566.3	1 256.4	100 380.0
<b>2001</b>								
March	984.8	918.1	1 902.9	258.4	4 032.2	4 695.6	1 260.5	99 019.9
June	1 025.2	904.1	1 929.3	252.1	4 215.0	4 621.5	1 269.5	98 317.8
September	1 033.8	884.5	1 918.3	233.9	3 928.4	3 997.4	1 314.8	98 093.1
December	930.7	810.1	1 740.8	222.6	3 588.3	4 505.6	1 322.9	98 933.5
TREND ESTIMATES								
<b>2000</b>								
September	974.2	927.7	1 901.9	268.5	4 158.4	4 698.5	1 246.9	101 150.7
December	986.7	926.8	1 913.5	258.1	4 128.8	4 688.6	1 247.0	100 553.9
<b>2001</b>								
March	1 005.3	922.4	1 927.7	253.7	4 108.6	4 591.2	1 260.0	99 169.9
June	1 012.9	901.8	1 914.7	247.7	4 051.1	4 467.0	1 280.7	98 473.9
September	1 001.1	869.1	1 870.2	236.8	3 920.3	4 340.6	1 303.1	98 346.0
December	975.5	832.5	1 808.0	224.3	3 713.3	4 301.0	1 326.3	98 524.9

(a) For more information refer to paragraphs 5 to 9 of the Explanatory Notes.

## LIVESTOCK PRODUCTS, Australia(a): All Series

## RED MEAT.....

Quarter	Beef	Veal	Mutton	Lamb	Pig meat	Total red meat	Chicken meat	Whole milk intake by factories	Brokers and dealers receipts of taxable wool
	tonnes	tonnes	tonnes	tonnes	tonnes	tonnes	tonnes	ML	tonnes
ORIGINAL									
<b>2000</b>									
September	510 074	13 429	82 735	94 018	90 708	790 965	152 454	2 610	169 850
December	502 390	6 545	92 709	92 647	89 541	783 832	161 639	3 594	174 391
<b>2001</b>									
March	485 963	5 743	93 669	90 351	87 319	763 045	150 536	2 443	138 105
June	522 974	7 757	76 359	88 057	97 600	792 746	154 777	1 902	107 515
September	516 268	11 657	71 991	80 221	98 254	778 392	155 611	2 592	150 701
December	451 830	5 482	82 208	92 196	94 725	726 441	165 047	n.y.a.	150 471
SEASONALLY ADJUSTED									
<b>2000</b>									
September	503 230	8 654	91 897	92 126	89 560	785 467	154 833	2 744	147 570
December	506 995	8 550	84 265	89 720	91 212	780 742	157 495	2 581	142 997
<b>2001</b>									
March	499 385	8 203	82 785	92 198	92 303	774 874	150 767	2 513	155 897
June	511 906	7 898	86 942	91 084	92 096	789 926	156 803	2 836	144 803
September	509 030	7 512	81 995	78 421	97 053	774 011	158 451	2 723	131 621
December	455 984	7 161	74 806	89 425	96 551	723 927	159 850	n.y.a.	122 928
TREND									
<b>2000</b>									
September	500 726	8 696	87 669	91 195	90 553	778 839	155 040	2 691	151 403
December	504 309	8 479	86 494	92 109	90 596	781 987	154 851	2 621	149 461
<b>2001</b>									
March	508 971	8 230	85 243	90 610	91 892	784 946	154 480	2 635	148 461
June	506 298	7 879	83 779	87 812	93 623	779 391	155 687	2 701	143 700
September	494 300	7 520	81 354	85 576	95 433	764 183	157 917	2 769	133 985
December	477 076	7 209	77 575	84 901	97 059	743 820	160 393	n.y.a.	124 839

(a) For more information refer to paragraphs 5 to 9 and 13 to 15 of the Explanatory Notes.



## NUMBER OF LIVESTOCK SLAUGHTERED(a), Bulls, Bullocks and Steers: All Series

	<i>New South Wales</i>	<i>Victoria</i>	<i>Queensland</i>	<i>South Australia</i>	<i>Western Australia</i>	<i>Tasmania</i>	<i>Australia</i>
<i>Quarter</i>	'000	'000	'000	'000	'000	'000	'000
ORIGINAL							
<b>2000</b>							
September	179.5	145.6	578.8	38.5	45.8	18.9	1 010.6
December	168.6	164.0	545.1	49.8	59.3	22.4	1 009.5
<b>2001</b>							
March	183.6	167.6	481.3	50.4	39.8	28.9	951.8
June	180.3	141.5	586.8	41.0	42.1	20.1	1 012.1
September	187.5	135.3	647.5	37.0	34.3	17.2	1 059.3
December	171.6	167.0	507.4	46.0	40.3	19.3	951.8
SEASONALLY ADJUSTED							
<b>2000</b>							
September	179.0	158.6	517.2	44.6	50.0	21.6	987.1
December	169.2	155.9	544.8	43.4	47.0	23.4	987.8
<b>2001</b>							
March	179.1	151.9	555.4	47.4	42.9	25.7	984.8
June	185.1	149.8	579.2	44.4	47.4	19.2	1 025.2
September	186.7	151.1	578.7	42.7	37.7	19.5	1 033.8
December	172.2	160.7	505.9	40.2	31.8	20.2	930.7
TREND ESTIMATES							
<b>2000</b>							
September	176.6	158.6	516.3	44.8	47.9	23.6	974.2
December	174.6	154.9	540.8	45.1	47.3	23.4	986.7
<b>2001</b>							
March	178.5	151.6	564.7	45.5	46.0	22.8	1 005.3
June	182.7	151.0	570.9	44.6	43.0	21.4	1 012.9
September	182.5	153.3	558.3	42.8	38.7	19.8	1 001.1
December	178.3	157.0	535.9	40.8	34.1	19.1	975.5

(a) For more information refer to paragraph 4 of the Explanatory Notes.

## NUMBER OF LIVESTOCK SLAUGHTERED(a), Cows and Heifers: All Series

	<i>New South Wales</i>	<i>Victoria</i>	<i>Queensland</i>	<i>South Australia</i>	<i>Western Australia</i>	<i>Tasmania</i>	<i>Australia</i>
<i>Quarter</i>	'000	'000	'000	'000	'000	'000	'000
ORIGINAL							
<b>2000</b>							
September	236.2	205.1	379.9	32.3	54.7	14.7	930.9
December	234.3	221.9	300.4	32.7	59.3	22.4	872.1
<b>2001</b>							
March	247.6	234.2	283.1	37.5	58.8	27.7	890.0
June	266.6	212.9	382.4	34.5	55.6	29.4	982.4
September	210.2	189.4	374.9	35.2	64.6	14.6	889.9
December	214.8	189.3	242.1	35.0	58.6	18.2	759.0
SEASONALLY ADJUSTED							
<b>2000</b>							
September	239.3	220.3	350.6	34.3	56.6	19.6	925.3
December	248.4	216.5	347.2	34.9	55.0	24.2	930.8
<b>2001</b>							
March	243.8	226.3	318.9	35.7	56.5	25.4	918.1
June	252.0	211.3	328.6	32.2	60.6	23.9	904.1
September	216.6	203.1	347.0	37.4	66.7	19.4	884.5
December	228.2	184.7	278.9	37.4	54.4	19.7	810.1
TREND ESTIMATES							
<b>2000</b>							
September	239.9	220.9	347.6	36.1	55.1	25.3	927.7
December	246.2	222.2	338.2	34.7	55.8	25.0	926.8
<b>2001</b>							
March	247.2	220.0	334.6	34.2	58.1	24.5	922.4
June	240.0	212.8	330.0	34.8	60.7	23.0	901.8
September	230.5	201.1	320.5	35.9	61.4	21.0	869.1
December	222.8	189.2	305.5	37.1	59.8	19.1	832.5

(a) For more information refer to paragraph 4 of the Explanatory Notes.

## NUMBER OF LIVESTOCK SLAUGHTERED(a), Total Cattle (excluding Calves): All Series

	<i>New South Wales</i>	<i>Victoria</i>	<i>Queensland</i>	<i>South Australia</i>	<i>Western Australia</i>	<i>Tasmania</i>	<i>Australia</i>
<i>Quarter</i>	'000	'000	'000	'000	'000	'000	'000
ORIGINAL							
<b>2000</b>							
September	415.7	350.7	958.6	70.8	100.5	33.6	1 941.5
December	403.0	385.9	845.5	82.6	118.6	44.7	1 881.6
<b>2001</b>							
March	431.2	401.8	764.4	87.9	98.6	56.6	1 841.9
June	446.9	354.4	969.1	75.5	97.7	49.5	1 994.5
September	397.7	324.8	1 022.4	72.2	98.9	31.8	1 949.2
December	386.3	356.3	749.4	81.0	98.8	37.5	1 710.8
SEASONALLY ADJUSTED							
<b>2000</b>							
September	418.3	378.9	867.8	78.9	106.6	41.2	1 912.4
December	417.6	372.4	892.0	78.3	102.0	47.5	1 918.6
<b>2001</b>							
March	423.0	378.1	874.3	83.0	99.4	51.1	1 902.9
June	437.1	361.0	907.8	76.7	108.0	43.1	1 929.3
September	403.3	354.3	925.7	80.1	104.4	39.0	1 918.3
December	400.5	345.4	784.9	77.6	86.2	39.9	1 740.8
TREND ESTIMATES							
<b>2000</b>							
September	416.5	379.6	863.9	80.9	103.0	48.9	1 901.9
December	420.8	377.1	879.0	79.8	103.1	48.4	1 913.5
<b>2001</b>							
March	425.7	371.6	899.3	79.7	104.1	47.3	1 927.7
June	422.7	363.8	900.9	79.5	103.7	44.4	1 914.7
September	413.0	354.4	878.9	78.6	100.1	40.8	1 870.2
December	401.1	346.2	841.4	77.9	93.9	38.2	1 808.0

(a) For more information refer to paragraph 4 of the Explanatory Notes.

## NUMBER OF LIVESTOCK SLAUGHTERED(a), Calves: All Series

	<i>New South Wales</i>	<i>Victoria</i>	<i>Queensland</i>	<i>South Australia</i>	<i>Western Australia</i>	<i>Tasmania</i>	<i>Australia</i>
<i>Quarter</i>	'000	'000	'000	'000	'000	'000	'000
ORIGINAL							
<b>2000</b>							
September	54.5	384.4	38.5	4.4	1.6	39.4	522.9
December	51.3	71.4	35.0	2.0	1.4	6.7	168.0
<b>2001</b>							
March	60.1	25.1	29.6	2.6	1.2	0.8	119.7
June	60.1	127.9	32.0	2.5	1.4	2.8	226.9
September	45.6	347.3	26.2	2.9	1.8	35.8	459.8
December	39.7	78.9	20.5	1.8	1.8	6.6	149.5
SEASONALLY ADJUSTED							
<b>2000</b>							
September	54.5	158.6	37.5	3.5	1.6	12.9	266.4
December	56.2	135.3	36.6	2.9	1.3	11.4	249.8
<b>2001</b>							
March	59.7	146.3	30.7	3.0	1.2	12.5	258.4
June	55.6	145.9	30.4	2.2	1.4	9.9	252.1
September	45.8	143.1	25.6	2.3	1.9	11.7	233.9
December	43.4	149.9	21.4	2.6	1.7	11.4	222.6
TREND ESTIMATES							
<b>2000</b>							
September	54.4	157.8	37.4	3.5	1.8	13.1	268.5
December	57.0	144.6	35.4	3.1	1.3	11.8	258.1
<b>2001</b>							
March	57.8	141.8	32.6	2.7	1.3	11.4	253.7
June	54.0	144.2	29.1	2.4	1.5	11.1	247.7
September	48.4	146.4	25.6	2.4	1.7	11.1	236.8
December	42.9	147.2	22.3	2.4	1.8	11.3	224.3

(a) For more information refer to paragraph 4 of the Explanatory Notes.

## NUMBER OF LIVESTOCK SLAUGHTERED(a), Sheep: All Series

	<i>New South Wales</i>	<i>Victoria</i>	<i>Queensland</i>	<i>South Australia</i>	<i>Western Australia</i>	<i>Tasmania</i>	<i>Australia</i>
<i>Quarter</i>	'000	'000	'000	'000	'000	'000	'000
ORIGINAL							
<b>2000</b>							
September	1 374.5	865.5	381.1	314.7	835.3	59.6	3 830.7
December	1 389.7	999.9	355.3	377.3	1 092.2	80.1	4 294.4
<b>2001</b>							
March	1 626.5	1 207.4	367.3	419.6	840.5	143.7	4 605.0
June	1 466.8	1 017.0	385.5	376.6	467.0	81.4	3 794.3
September	1 443.5	822.9	328.3	268.7	549.4	48.5	3 461.4
December	1 495.0	1 052.8	305.0	338.4	591.5	80.8	3 863.4
SEASONALLY ADJUSTED							
<b>2000</b>							
September	1 453.3	1 052.6	361.7	426.5	974.6	102.9	4 356.3
December	1 349.4	886.9	361.5	324.8	944.1	77.1	3 983.0
<b>2001</b>							
March	1 511.4	1 039.2	350.4	340.4	729.1	101.7	4 032.2
June	1 548.5	1 141.7	421.3	432.4	562.5	84.1	4 215.0
September	1 521.0	998.7	310.8	364.0	640.8	83.6	3 928.4
December	1 453.5	936.0	310.8	291.7	511.3	77.9	3 588.3
TREND ESTIMATES							
<b>2000</b>							
September	1 401.4	1 040.5	354.0	349.8	948.8	112.0	4 158.4
December	1 433.1	1 058.1	365.2	362.2	881.8	92.8	4 128.8
<b>2001</b>							
March	1 482.8	1 077.5	375.3	375.3	757.4	86.5	4 108.6
June	1 519.2	1 066.9	367.4	377.7	638.7	87.7	4 051.1
September	1 517.6	1 023.2	343.3	364.0	572.2	83.6	3 920.3
December	1 480.6	962.8	313.3	325.7	537.1	77.7	3 713.3

(a) For more information refer to paragraph 4 of the Explanatory Notes.

## NUMBER OF LIVESTOCK SLAUGHTERED(a), Lambs: All Series

	<i>New South Wales</i>	<i>Victoria</i>	<i>Queensland</i>	<i>South Australia</i>	<i>Western Australia</i>	<i>Tasmania</i>	<i>Australia</i>
<i>Quarter</i>	'000	'000	'000	'000	'000	'000	'000
ORIGINAL							
<b>2000</b>							
September	1 159.0	1 949.0	273.5	737.7	489.4	113.2	4 721.9
December	989.4	2 133.2	234.9	727.7	549.3	104.0	4 738.5
<b>2001</b>							
March	1 010.3	2 002.7	249.9	680.8	524.0	103.1	4 570.6
June	1 044.5	1 880.8	265.8	728.9	457.3	95.9	4 473.1
September	1 083.6	1 641.3	257.8	567.9	418.5	118.0	4 087.1
December	1 141.8	1 875.8	151.9	822.4	565.2	112.6	4 669.6
SEASONALLY ADJUSTED							
<b>2000</b>							
September	1 089.3	1 952.6	251.6	766.3	496.1	134.3	4 627.4
December	994.3	1 978.2	250.1	736.0	489.9	113.6	4 566.3
<b>2001</b>							
March	1 072.2	2 033.2	251.6	700.9	583.3	92.0	4 695.6
June	1 045.4	2 006.4	271.0	675.9	460.0	85.7	4 621.5
September	1 018.3	1 642.6	237.2	587.8	425.6	139.7	3 997.4
December	1 147.6	1 741.8	161.8	835.2	503.1	123.0	4 505.6
TREND ESTIMATES							
<b>2000</b>							
September	1 067.2	1 962.6	251.0	767.0	536.5	119.8	4 698.5
December	1 054.3	2 017.8	253.5	745.6	520.9	108.8	4 688.6
<b>2001</b>							
March	1 032.8	2 003.9	261.4	688.9	508.6	99.4	4 591.2
June	1 043.2	1 910.5	253.3	663.2	487.8	102.6	4 467.0
September	1 067.8	1 785.7	226.0	683.9	464.6	117.4	4 340.6
December	1 092.6	1 693.3	190.6	736.5	458.7	129.8	4 301.0

(a) For more information refer to paragraph 4 of the Explanatory Notes.

## NUMBER OF LIVESTOCK SLAUGHTERED(a), Pigs: All Series

	New South Wales	Victoria	Queensland	South Australia	Western Australia	Tasmania	Australia
Quarter	'000	'000	'000	'000	'000	'000	'000
ORIGINAL							
<b>2000</b>							
September	429.2	277.3	268.0	118.4	128.7	14.6	1 238.0
December	416.7	261.5	295.4	119.9	131.0	13.5	1 239.6
<b>2001</b>							
March	429.6	258.8	239.9	139.9	134.4	13.7	1 217.9
June	464.1	268.1	275.2	147.6	148.5	15.8	1 320.8
September	474.0	267.1	267.0	145.4	142.3	13.7	1 311.2
December	465.8	280.9	277.9	129.7	140.9	16.3	1 313.4
SEASONALLY ADJUSTED							
<b>2000</b>							
September	421.4	277.9	271.2	123.9	126.4	14.3	1 231.6
December	415.9	267.0	297.2	126.3	140.1	14.2	1 256.4
<b>2001</b>							
March	443.7	268.9	247.9	137.8	135.0	14.5	1 260.5
June	460.0	255.1	262.3	138.3	140.1	14.5	1 269.5
September	470.8	268.1	270.7	149.0	142.7	13.6	1 314.8
December	459.0	285.0	277.8	139.4	149.1	17.0	1 322.9
TREND ESTIMATES							
<b>2000</b>							
September	409.0	290.1	281.2	123.3	130.7	14.8	1 246.9
December	426.2	267.3	274.5	128.6	134.3	14.3	1 247.0
<b>2001</b>							
March	443.3	260.4	265.6	135.4	137.5	14.1	1 260.0
June	456.8	263.0	262.6	140.8	140.1	14.3	1 280.7
September	465.2	269.2	267.5	143.5	143.4	14.9	1 303.1
December	466.4	278.4	278.1	143.6	148.1	15.8	1 326.3

(a) For more information refer to paragraph 4 of the Explanatory Notes.

## NUMBER OF CHICKENS SLAUGHTERED(a): All Series

	<i>New South Wales</i>	<i>Victoria</i>	<i>Queensland</i>	<i>South Australia</i>	<i>Western Australia</i>	<i>Australia</i>
<i>Quarter</i>	'000	'000	'000	'000	'000	'000
ORIGINAL						
<b>2000</b>						
September	37 486.4	26 285.8	16 913.0	n.p.	n.p.	<b>100 165.6</b>
December	38 587.5	26 591.2	17 855.6	n.p.	n.p.	<b>102 953.7</b>
<b>2001</b>						
March	37 889.6	26 067.6	16 975.5	n.p.	n.p.	<b>99 139.6</b>
June	37 723.3	25 135.4	16 257.9	n.p.	n.p.	<b>96 609.7</b>
September	37 628.1	24 681.4	16 076.3	n.p.	n.p.	<b>96 828.0</b>
December	39 023.9	25 130.9	18 046.9	n.p.	n.p.	<b>101 765.1</b>
SEASONALLY ADJUSTED						
<b>2000</b>						
September	37 585.3	26 966.0	17 369.0	n.p.	n.p.	<b>101 605.4</b>
December	38 099.1	25 818.7	17 151.4	n.p.	n.p.	<b>100 380.0</b>
<b>2001</b>						
March	37 781.6	26 075.4	16 898.3	n.p.	n.p.	<b>99 019.9</b>
June	38 479.0	25 441.9	16 579.0	n.p.	n.p.	<b>98 317.8</b>
September	37 689.9	25 251.5	16 527.6	n.p.	n.p.	<b>98 093.1</b>
December	38 403.0	24 205.7	17 327.6	n.p.	n.p.	<b>98 933.5</b>
TREND ESTIMATES						
<b>2000</b>						
September	37 575.7	26 676.4	17 307.7	n.p.	n.p.	<b>101 150.7</b>
December	38 017.7	26 288.8	17 161.5	n.p.	n.p.	<b>100 553.9</b>
<b>2001</b>						
March	38 061.9	25 868.5	16 830.1	n.p.	n.p.	<b>99 169.9</b>
June	38 075.6	25 510.2	16 678.8	n.p.	n.p.	<b>98 473.9</b>
September	38 109.6	25 036.7	16 762.9	n.p.	n.p.	<b>98 346.0</b>
December	38 208.1	24 461.0	16 996.8	n.p.	n.p.	<b>98 524.9</b>

(a) For more information refer to paragraphs 8 and 9 of the Explanatory Notes.



## NUMBER OF LIVESTOCK SLAUGHTERED(a): Original

<i>Financial year</i>	<i>New South Wales</i>	<i>Victoria</i>	<i>Queensland</i>	<i>South Australia</i>	<i>Western Australia</i>	<i>Tasmania</i>	<i>Australia</i>
	'000	'000	'000	'000	'000	'000	'000
<b>BULLS, BULLOCKS AND STEERS</b>							
<b>1998-1999</b>	780.9	852.1	1 808.0	123.1	197.9	94.8	<b>3 871.1</b>
<b>1999-2000</b>	755.4	710.0	1 958.2	169.5	181.5	109.0	<b>3 892.7</b>
<b>2000-2001</b>	712.1	618.7	2 191.9	179.7	187.0	90.2	<b>3 984.0</b>
<b>COWS AND HEIFERS</b>							
<b>1998-1999</b>	1 113.6	899.2	1 499.1	154.7	240.8	116.3	<b>4 068.0</b>
<b>1999-2000</b>	969.4	813.8	1 354.2	145.2	212.4	108.9	<b>3 627.3</b>
<b>2000-2001</b>	984.7	874.0	1 345.7	137.0	228.4	94.2	<b>3 675.4</b>
<b>TOTAL CATTLE (excluding calves)</b>							
<b>1998-1999</b>	1 894.5	1 751.3	3 307.0	277.8	438.7	211.1	<b>7 939.1</b>
<b>1999-2000</b>	1 724.8	1 523.8	3 312.5	314.7	393.9	217.9	<b>7 520.0</b>
<b>2000-2001</b>	1 696.8	1 492.8	3 537.7	316.7	415.4	184.4	<b>7 659.5</b>
<b>CALVES</b>							
<b>1998-1999</b>	242.6	714.4	112.3	19.9	6.4	61.0	<b>1 157.4</b>
<b>1999-2000</b>	211.0	678.5	141.7	17.6	10.5	62.1	<b>1 122.1</b>
<b>2000-2001</b>	226.0	608.9	135.1	11.6	5.6	49.7	<b>1 037.6</b>
<b>SHEEP</b>							
<b>1998-1999</b>	5 583.2	3 079.6	1 333.8	2 018.3	2 672.2	439.9	<b>15 127.0</b>
<b>1999-2000</b>	5 385.6	3 816.0	1 423.9	1 223.8	3 418.1	589.9	<b>15 857.2</b>
<b>2000-2001</b>	5 857.4	4 089.8	1 489.2	1 488.2	3 235.0	364.7	<b>16 524.4</b>
<b>LAMBS</b>							
<b>1998-1999</b>	3 913.2	6 699.4	756.5	2 153.5	2 076.4	480.1	<b>16 079.2</b>
<b>1999-2000</b>	4 059.0	7 144.5	917.6	2 634.7	2 345.0	456.3	<b>17 557.1</b>
<b>2000-2001</b>	4 203.2	7 965.7	1 024.1	2 875.1	2 020.0	416.1	<b>18 504.1</b>
<b>PIGS</b>							
<b>1998-1999</b>	1 347.1	1 572.8	1 132.4	465.8	568.7	81.2	<b>5 176.3</b>
<b>1999-2000</b>	1 408.2	1 443.7	1 111.2	469.2	513.9	70.1	<b>5 024.7</b>
<b>2000-2001</b>	1 739.5	1 065.6	1 078.4	525.7	542.6	57.6	<b>5 016.3</b>
<b>CHICKENS</b>							
<b>1998-1999</b>	140 794.0	95 543.3	65 989.7	n.p.	n.p.	n.p.	<b>374 979.5</b>
<b>1999-2000</b>	139 966.7	105 889.3	68 922.0	n.p.	n.p.	n.p.	<b>393 991.8</b>
<b>2000-2001</b>	151 686.8	104 080.0	68 002.0	n.p.	n.p.	n.p.	<b>398 868.6</b>

(a) For more information refer to paragraphs 4, 5 and 7 to 9 of the Explanatory Notes.

## RED MEAT PRODUCED(a), Beef: All Series

	<i>New South Wales</i>	<i>Victoria</i>	<i>Queensland</i>	<i>South Australia</i>	<i>Western Australia</i>	<i>Tasmania</i>	<i>Australia</i>
<i>Quarter</i>	<i>tonnes</i>	<i>tonnes</i>	<i>tonnes</i>	<i>tonnes</i>	<i>tonnes</i>	<i>tonnes</i>	<i>tonnes</i>
ORIGINAL							
<b>2000</b>							
September	105 596	81 363	269 611	18 011	24 059	8 993	510 074
December	104 186	91 274	242 864	21 982	29 510	12 289	502 390
<b>2001</b>							
March	109 751	94 037	219 924	23 367	23 555	15 040	485 963
June	112 365	81 246	274 055	19 172	23 401	12 450	522 974
September	101 621	77 516	286 885	18 271	23 022	8 662	516 268
December	99 335	85 936	210 336	21 332	24 289	10 313	451 830
SEASONALLY ADJUSTED							
<b>2000</b>							
September	107 335	89 426	243 875	20 672	25 833	11 575	503 230
December	105 802	87 622	256 468	20 299	24 575	12 596	506 995
<b>2001</b>							
March	107 193	86 903	248 551	21 912	23 687	13 549	499 385
June	111 599	84 202	258 005	19 619	26 813	10 938	511 906
September	103 230	85 189	259 697	20 918	24 828	11 124	509 030
December	100 949	82 479	221 697	19 735	20 189	10 589	455 984
TREND ESTIMATES							
<b>2000</b>							
September	106 404	88 915	244 791	21 046	24 943	12 596	500 726
December	107 001	88 044	250 587	20 847	24 905	12 514	504 309
<b>2001</b>							
March	108 262	86 493	256 287	20 806	25 202	12 423	508 971
June	107 645	85 197	255 423	20 631	25 123	11 816	506 298
September	105 166	84 115	247 882	20 293	24 034	11 000	494 300
December	101 980	83 257	236 496	19 969	22 218	10 456	477 076

(a) For more information refer to paragraphs 4 to 6 of the Explanatory Notes.

## RED MEAT PRODUCED(a), Veal: All Series

	<i>New South Wales</i>	<i>Victoria</i>	<i>Queensland</i>	<i>South Australia</i>	<i>Western Australia</i>	<i>Tasmania</i>	<i>Australia</i>
<i>Quarter</i>	<i>tonnes</i>	<i>tonnes</i>	<i>tonnes</i>	<i>tonnes</i>	<i>tonnes</i>	<i>tonnes</i>	<i>tonnes</i>
ORIGINAL							
<b>2000</b>							
September	3 447	7 441	1 537	112	116	764	13 429
December	3 240	1 403	1 593	58	98	141	6 545
<b>2001</b>							
March	3 728	536	1 290	70	82	26	5 743
June	3 799	2 462	1 265	67	86	65	7 757
September	2 839	6 644	1 265	75	118	704	11 657
December	2 471	1 713	983	57	106	140	5 482
SEASONALLY ADJUSTED							
<b>2000</b>							
September	3 507	3 130	1 591	93	113	256	8 654
December	3 574	2 552	1 675	77	93	232	8 550
<b>2001</b>							
March	3 725	2 595	1 259	75	84	266	8 203
June	3 421	2 843	1 193	60	90	210	7 898
September	2 899	2 788	1 313	62	115	235	7 512
December	2 716	3 134	1 033	76	101	233	7 161
TREND ESTIMATES							
<b>2000</b>							
September	3 453	3 046	1 657	93	133	264	8 696
December	3 613	2 724	1 516	81	92	243	8 479
<b>2001</b>							
March	3 622	2 622	1 373	70	84	238	8 230
June	3 361	2 732	1 256	65	95	233	7 879
September	3 021	2 902	1 177	66	103	229	7 520
December	2 696	3 025	1 129	69	109	228	7 209

(a) For more information refer to paragraphs 4 to 6 of the Explanatory Notes.

## RED MEAT PRODUCED(a), Mutton: All Series

	<i>New South Wales</i>	<i>Victoria</i>	<i>Queensland</i>	<i>South Australia</i>	<i>Western Australia</i>	<i>Tasmania</i>	<i>Australia</i>
<i>Quarter</i>	<i>tonnes</i>	<i>tonnes</i>	<i>tonnes</i>	<i>tonnes</i>	<i>tonnes</i>	<i>tonnes</i>	<i>tonnes</i>
ORIGINAL							
<b>2000</b>							
September	30 823	18 336	7 427	8 072	16 932	1 146	82 735
December	31 247	21 172	6 801	9 826	22 052	1 610	92 709
<b>2001</b>							
March	34 102	23 127	7 073	9 885	16 610	2 873	93 669
June	30 663	19 331	7 101	8 321	9 341	1 603	76 359
September	31 491	16 281	5 823	6 290	11 154	952	71 991
December	33 543	21 120	5 720	8 221	11 988	1 617	82 208
SEASONALLY ADJUSTED							
<b>2000</b>							
September	32 043	21 783	6 980	10 654	19 561	2 086	91 897
December	29 641	18 307	6 775	8 164	18 834	1 586	84 265
<b>2001</b>							
March	32 099	20 269	6 778	8 045	14 469	2 073	82 785
June	33 313	22 403	7 987	10 257	11 498	1 529	86 942
September	32 594	19 281	5 459	8 281	12 877	1 733	81 995
December	31 864	18 309	5 706	6 838	10 241	1 596	74 806
TREND ESTIMATES							
<b>2000</b>							
September	30 790	20 359	6 796	8 765	19 117	2 192	87 669
December	31 180	20 171	6 996	8 978	17 628	1 861	86 494
<b>2001</b>							
March	31 875	20 444	7 128	9 019	15 138	1 733	85 243
June	32 550	20 620	6 872	8 862	12 833	1 722	83 779
September	32 709	20 033	6 291	8 443	11 533	1 663	81 354
December	32 249	18 740	5 656	7 529	10 892	1 594	77 575

(a) For more information refer to paragraphs 4 to 6 of the Explanatory Notes.

## RED MEAT PRODUCED(a), Lamb: All Series

	<i>New South Wales</i>	<i>Victoria</i>	<i>Queensland</i>	<i>South Australia</i>	<i>Western Australia</i>	<i>Tasmania</i>	<i>Australia</i>
<i>Quarter</i>	<i>tonnes</i>	<i>tonnes</i>	<i>tonnes</i>	<i>tonnes</i>	<i>tonnes</i>	<i>tonnes</i>	<i>tonnes</i>
ORIGINAL							
<b>2000</b>							
September	23 075	38 694	5 335	15 785	8 929	2 201	<b>94 018</b>
December	19 332	41 226	4 543	15 689	9 864	1 992	<b>92 647</b>
<b>2001</b>							
March	20 013	38 980	4 674	14 968	9 745	1 971	<b>90 351</b>
June	20 488	36 640	5 095	15 451	8 533	1 850	<b>88 057</b>
September	21 724	31 845	4 857	11 694	7 745	2 355	<b>80 221</b>
December	22 656	36 002	2 878	17 627	10 828	2 204	<b>92 196</b>
SEASONALLY ADJUSTED							
<b>2000</b>							
September	21 709	38 266	4 897	16 888	9 110	2 394	<b>92 126</b>
December	19 408	38 928	4 853	16 144	8 832	2 293	<b>89 720</b>
<b>2001</b>							
March	21 303	39 285	4 714	15 086	10 825	1 769	<b>92 198</b>
June	20 443	39 129	5 257	14 031	8 508	1 687	<b>91 084</b>
September	20 432	31 383	4 458	12 480	7 932	2 557	<b>78 421</b>
December	22 746	34 070	3 027	18 169	9 673	2 534	<b>89 425</b>
TREND ESTIMATES							
<b>2000</b>							
September	21 153	38 676	4 860	16 917	9 906	2 268	<b>91 195</b>
December	20 793	39 516	4 879	16 289	9 539	2 095	<b>92 109</b>
<b>2001</b>							
March	20 344	38 950	5 005	14 743	9 316	1 922	<b>90 610</b>
June	20 623	36 980	4 824	14 029	9 045	1 973	<b>87 812</b>
September	21 200	34 539	4 283	14 538	8 735	2 259	<b>85 576</b>
December	21 750	32 999	3 589	15 807	8 729	2 551	<b>84 901</b>

(a) For more information refer to paragraphs 4 to 6 of the Explanatory Notes.

## RED MEAT PRODUCED(a), Pig Meat: All Series

	<i>New South Wales</i>	<i>Victoria</i>	<i>Queensland</i>	<i>South Australia</i>	<i>Western Australia</i>	<i>Tasmania</i>	<b>Australia</b>
<i>Quarter</i>	<i>tonnes</i>	<i>tonnes</i>	<i>tonnes</i>	<i>tonnes</i>	<i>tonnes</i>	<i>tonnes</i>	<i>tonnes</i>
ORIGINAL							
<b>2000</b>							
September	31 771	20 999	19 929	8 227	8 771	927	<b>90 708</b>
December	30 568	19 667	21 469	8 143	8 786	837	<b>89 541</b>
<b>2001</b>							
March	31 924	18 734	16 892	9 785	9 074	837	<b>87 319</b>
June	36 107	19 554	20 211	10 524	10 150	982	<b>97 600</b>
September	37 022	19 625	20 563	10 274	9 848	844	<b>98 254</b>
December	35 263	19 419	20 798	8 984	9 212	967	<b>94 725</b>
SEASONALLY ADJUSTED							
<b>2000</b>							
September	31 567	20 541	19 957	8 134	8 502	908	<b>89 560</b>
December	30 121	20 028	22 106	8 883	9 362	889	<b>91 212</b>
<b>2001</b>							
March	33 520	19 991	17 579	9 827	9 295	898	<b>92 303</b>
June	35 156	18 401	18 873	9 771	9 529	886	<b>92 096</b>
September	36 818	19 343	20 622	10 188	9 783	826	<b>97 053</b>
December	34 760	20 001	21 418	9 808	9 708	1 030	<b>96 551</b>
TREND ESTIMATES							
<b>2000</b>							
September	30 159	21 552	20 742	8 398	8 719	935	<b>90 553</b>
December	31 539	19 906	21 910	8 911	9 164	895	<b>90 596</b>
<b>2001</b>							
March	33 326	19 284	17 442	9 549	9 374	874	<b>91 892</b>
June	34 936	19 167	19 028	9 912	9 564	876	<b>93 623</b>
September	35 859	19 261	20 363	9 999	9 676	903	<b>95 433</b>
December	35 846	19 607	21 372	9 960	9 788	948	<b>97 059</b>

(a) For more information refer to paragraphs 4 to 6 of the Explanatory Notes.

## TOTAL RED MEAT PRODUCED(a): All Series

	<i>New South Wales</i>	<i>Victoria</i>	<i>Queensland</i>	<i>South Australia</i>	<i>Western Australia</i>	<i>Tasmania</i>	<i>Australia</i>
<i>Quarter</i>	<i>tonnes</i>	<i>tonnes</i>	<i>tonnes</i>	<i>tonnes</i>	<i>tonnes</i>	<i>tonnes</i>	<i>tonnes</i>
ORIGINAL							
<b>2000</b>							
September	194 712	166 832	303 838	50 206	58 806	14 031	<b>790 965</b>
December	188 574	174 743	277 271	55 698	70 310	16 869	<b>783 832</b>
<b>2001</b>							
March	199 518	175 413	249 852	58 074	59 065	20 746	<b>763 045</b>
June	203 421	159 234	307 726	53 535	51 512	16 950	<b>792 746</b>
September	194 697	151 912	319 394	46 604	51 887	13 516	<b>778 392</b>
December	193 266	164 190	240 714	56 222	56 424	15 241	<b>726 441</b>
SEASONALLY ADJUSTED							
<b>2000</b>							
September	196 161	173 146	277 300	56 441	63 119	17 219	<b>785 467</b>
December	188 546	167 437	291 877	53 567	61 696	17 596	<b>780 742</b>
<b>2001</b>							
March	197 840	169 043	278 881	54 945	58 360	18 555	<b>774 874</b>
June	203 932	166 978	291 315	53 738	56 438	15 250	<b>789 926</b>
September	195 973	157 984	291 549	51 929	55 535	16 475	<b>774 011</b>
December	193 035	157 993	252 881	54 626	49 912	15 982	<b>723 927</b>
TREND ESTIMATES							
<b>2000</b>							
September	191 959	172 548	278 846	55 219	62 818	18 255	<b>778 839</b>
December	194 126	170 361	285 888	55 106	61 328	17 608	<b>781 987</b>
<b>2001</b>							
March	197 429	167 793	287 235	54 187	59 114	17 190	<b>784 946</b>
June	199 115	164 696	287 403	53 499	56 660	16 620	<b>779 391</b>
September	197 955	160 850	279 996	53 339	54 081	16 054	<b>764 183</b>
December	194 521	157 628	268 242	53 334	51 736	15 777	<b>743 820</b>

(a) For more information refer to paragraphs 4 to 6 of the Explanatory Notes.

## CHICKEN MEAT PRODUCED(a): All Series

	<i>New South Wales</i>	<i>Victoria</i>	<i>Queensland</i>	<i>South Australia</i>	<i>Western Australia</i>	<i>Australia</i>
<i>Quarter</i>	<i>tonnes</i>	<i>tonnes</i>	<i>tonnes</i>	<i>tonnes</i>	<i>tonnes</i>	<i>tonnes</i>
ORIGINAL						
<b>2000</b>						
September	57 150	42 735	23 628	n.p.	n.p.	<b>152 454</b>
December	62 506	46 915	24 700	n.p.	n.p.	<b>161 639</b>
<b>2001</b>						
March	60 610	42 335	22 984	n.p.	n.p.	<b>150 536</b>
June	64 036	43 788	22 552	n.p.	n.p.	<b>154 777</b>
September	65 833	41 170	22 114	n.p.	n.p.	<b>155 611</b>
December	67 103	43 033	25 321	n.p.	n.p.	<b>165 047</b>
SEASONALLY ADJUSTED						
<b>2000</b>						
September	58 155	43 657	24 106	n.p.	n.p.	<b>154 833</b>
December	61 298	45 098	23 775	n.p.	n.p.	<b>157 495</b>
<b>2001</b>						
March	60 577	42 469	23 152	n.p.	n.p.	<b>150 767</b>
June	64 682	44 517	22 826	n.p.	n.p.	<b>156 803</b>
September	67 187	42 037	22 580	n.p.	n.p.	<b>158 451</b>
December	65 189	41 367	24 358	n.p.	n.p.	<b>159 850</b>
TREND ESTIMATES						
<b>2000</b>						
September	58 787	44 219	23 876	n.p.	n.p.	<b>155 040</b>
December	60 020	44 168	23 729	n.p.	n.p.	<b>154 851</b>
<b>2001</b>						
March	62 156	43 831	23 152	n.p.	n.p.	<b>154 480</b>
June	64 220	43 267	22 897	n.p.	n.p.	<b>155 687</b>
September	65 746	42 456	23 135	n.p.	n.p.	<b>157 917</b>
December	66 688	41 727	23 671	n.p.	n.p.	<b>160 393</b>

(a) For more information refer to paragraphs 8 and 9 of the Explanatory Notes.



## MEAT PRODUCED(a): Original

<i>Financial year</i>	<i>New South Wales</i> tonnes	<i>Victoria</i> tonnes	<i>Queensland</i> tonnes	<i>South Australia</i> tonnes	<i>Western Australia</i> tonnes	<i>Tasmania</i> tonnes	<i>Australia</i> tonnes
<b>BEEF</b>							
<b>1998-1999</b>	437 769	398 815	904 430	62 266	104 979	53 271	<b>1 972 736</b>
<b>1999-2000</b>	431 983	351 273	932 053	78 001	94 973	57 557	<b>1 952 321</b>
<b>2000-2001</b>	431 898	347 920	1 006 454	82 533	100 524	48 771	<b>2 021 401</b>
<b>VEAL</b>							
<b>1998-1999</b>	15 630	14 225	5 604	607	436	1 241	<b>37 792</b>
<b>1999-2000</b>	13 044	13 370	6 550	471	859	1 236	<b>35 581</b>
<b>2000-2001</b>	14 214	11 842	5 684	307	382	996	<b>33 474</b>
<b>MUTTON</b>							
<b>1998-1999</b>	117 416	61 646	26 042	48 029	54 451	8 724	<b>316 307</b>
<b>1999-2000</b>	118 947	76 719	27 704	28 969	69 077	11 796	<b>333 212</b>
<b>2000-2001</b>	126 835	81 965	28 401	36 103	64 936	7 232	<b>345 472</b>
<b>LAMB</b>							
<b>1998-1999</b>	77 138	128 380	14 134	44 172	39 021	9 222	<b>312 068</b>
<b>1999-2000</b>	80 016	140 215	17 456	56 667	44 136	8 833	<b>347 323</b>
<b>2000-2001</b>	82 908	155 540	19 648	61 893	37 070	8 014	<b>365 073</b>
<b>PIG MEAT</b>							
<b>1998-1999</b>	97 185	114 582	84 053	30 864	37 534	5 242	<b>369 851</b>
<b>1999-2000</b>	103 234	106 690	82 037	31 927	34 201	4 403	<b>362 855</b>
<b>2000-2001</b>	130 371	78 954	78 500	36 679	36 781	3 583	<b>365 168</b>
<b>TOTAL RED MEAT</b>							
<b>1998-1999</b>	745 138	717 648	1 034 263	185 938	236 421	77 700	<b>3 008 753</b>
<b>1999-2000</b>	747 224	688 266	1 065 801	196 036	243 247	83 825	<b>3 031 291</b>
<b>2000-2001</b>	786 225	676 222	1 138 687	217 514	239 693	68 596	<b>3 130 588</b>
<b>CHICKEN MEAT</b>							
<b>1998-1999</b>	223 222	153 601	88 086	n.p.	n.p.	n.p.	<b>564 270</b>
<b>1999-2000</b>	221 245	170 123	95 387	n.p.	n.p.	n.p.	<b>597 680</b>
<b>2000-2001</b>	244 302	175 773	93 863	n.p.	n.p.	n.p.	<b>619 406</b>

(a) For more information refer to paragraphs 4 to 9 of the Explanatory Notes.

## EXPORTS OF FRESH, FROZEN AND PROCESSED MEAT, Australia(a): Original

Period	FRESH, CHILLED OR FROZEN MEAT.....								PROCESSED MEAT.		
	<i>Beef bone -in</i>	<i>Beef bone -out</i>	<i>Veal bone -in</i>	<i>Veal bone -out</i>	<i>Mutton bone -in</i>	<i>Mutton bone -out</i>	<i>Lamb bone -in</i>	<i>Lamb bone -out</i>	<i>Pork</i>	<i>Bacon and ham</i>	<i>Canned meat</i>
	tonnes	tonnes	tonnes	tonnes	tonnes	tonnes	tonnes	tonnes	tonnes	tonnes	tonnes
<b>1998-1999</b>	61 019	836 576	1 614	6 143	114 745	51 398	71 576	9 334	16 510	168	13 056
<b>1999-2000</b>	45 508	818 667	1 555	7 395	120 946	55 499	86 551	11 064	39 227	88	13 867
<b>2000-2001</b>	42 000	940 312	2 078	6 440	127 841	63 754	103 652	12 328	43 939	280	14 884
<b>2000</b>											
September	12 143	229 812	605	2 679	24 961	16 069	26 687	2 958	10 231	76	3 679
December	13 964	249 817	502	1 962	34 515	19 391	29 031	3 230	10 043	67	3 537
<b>2001</b>											
March	8 498	207 854	370	561	35 284	14 852	23 211	2 906	10 539	67	3 558
June	7 395	252 829	601	1 238	33 081	13 442	24 723	3 235	13 125	70	4 110
September	7 087	256 571	578	3 312	26 363	12 849	22 725	2 904	15 056	14	4 176
December	9 317	215 157	632	1 551	33 345	13 666	29 984	3 352	14 031	59	3 756

(a) For more information refer to paragraphs 10 and 11 of the Explanatory Notes.

## EXPORTS OF LIVE SHEEP AND CATTLE, Australia(a): Original

	<i>Number</i>	<i>Gross weight</i>	<i>Gross value</i>	<i>Unit value</i>
<i>Period</i>	<i>'000</i>	<i>'000 tonnes</i>	<i>\$'000</i>	<i>\$</i>
SHEEP				
<b>1998-1999</b>	4 958.7	254.9	181 671	36.64
<b>1999-2000</b>	4 858.6	243.3	180 345	37.12
<b>2000-2001</b>	5 936.0	283.6	257 661	43.41
<b>2000</b>				
September	1 241.4	60.7	48 598	39.15
December	1 657.2	77.9	67 080	40.48
<b>2001</b>				
March	1 726.6	82.0	77 523	44.90
June	1 310.7	63.1	64 460	49.18
September	1 666.6	78.2	93 117	55.87
December	2 000.8	94.0	121 354	60.65
CATTLE				
<b>1998-1999</b>	713.0	264.7	342 667	480.57
<b>1999-2000</b>	845.7	317.1	432 645	511.60
<b>2000-2001</b>	845.8	314.3	481 827	569.66
<b>2000</b>				
September	238.9	84.6	115 548	483.76
December	251.6	94.5	145 817	579.49
<b>2001</b>				
March	184.9	71.3	115 546	624.93
June	170.4	63.8	104 916	615.59
September	231.0	82.3	141 626	613.16
December	216.1	79.5	155 480	719.54

(a) For more information refer to paragraph 12 of the Explanatory Notes.

## WHOLE MILK INTAKE, By Factories(a): All Series

	<i>New South Wales(b)</i>	<i>Victoria</i>	<i>Queensland</i>	<i>South Australia</i>	<i>Western Australia</i>	<i>Tasmania</i>	<i>Australia(c)</i>
<i>Quarter</i>	<i>ML</i>	<i>ML</i>	<i>ML</i>	<i>ML</i>	<i>ML</i>	<i>ML</i>	<i>ML</i>
ORIGINAL							
<b>2000</b>							
June	320	1 031	188	158	101	85	1 883
September	353	1 669	204	173	110	101	2 610
December	385	2 465	204	207	105	228	3 594
<b>2001</b>							
March	300	1 553	183	161	90	156	2 443
June	291	1 090	170	157	89	105	1 902
September	335	1 689	189	172	98	110	2 592
SEASONALLY ADJUSTED							
<b>2000</b>							
June	358	1 778	207	184	104	144	2 775
September	350	1 767	198	173	102	154	2 744
December	340	1 643	187	171	103	137	2 581
<b>2001</b>							
March	315	1 594	190	175	96	143	2 513
June	326	1 872	187	182	92	177	2 836
September	328	1 785	180	172	91	167	2 723
TREND ESTIMATES							
<b>2000</b>							
June	354	1 766	206	181	104	149	2 760
September	350	1 721	197	176	103	144	2 691
December	340	1 672	191	173	101	144	2 621
<b>2001</b>							
March	332	1 691	188	175	97	152	2 635
June	327	1 756	185	177	93	163	2 701
September	325	1 824	183	176	90	171	2 769

(a) For more information refer to paragraph 13 of the Explanatory Notes.

(b) New South Wales total includes Australian Capital Territory.

(c) Australian total excludes Northern Territory.

Source: Original series data from Australian Dairy Corporation.

## MARKET MILK SALES, By Factories(a): All Series

	New South Wales	Victoria	Queensland	South Australia	Western Australia	Tasmania	Australia(b)
Quarter	ML	ML	ML	ML	ML	ML	ML
ORIGINAL							
<b>2000</b>							
June	140	110	95	44	48	12	448
September	152	115	99	51	49	13	479
December	150	112	99	49	48	12	470
<b>2001</b>							
March	144	113	96	49	47	12	462
June	141	117	99	51	49	12	468
September	148	118	102	49	48	12	477
SEASONALLY ADJUSTED							
<b>2000</b>							
June	141	109	95	45	48	12	449
September	148	112	97	50	49	13	468
December	149	112	99	48	48	12	469
<b>2001</b>							
March	148	117	98	50	47	13	472
June	142	116	100	51	48	12	470
September	144	114	100	49	48	12	467
TREND ESTIMATES							
<b>2000</b>							
June	143	110	96	45	48	12	455
September	147	111	97	46	48	12	461
December	148	114	98	48	48	12	468
<b>2001</b>							
March	147	115	99	50	48	12	471
June	145	116	99	50	48	12	470
September	143	115	100	50	48	12	468

(a) For more information refer to paragraph 13 of the Explanatory Notes.

Source: Original series data from Australian Dairy Corporation.

(b) Australian total excludes Australian Capital Territory and Northern Territory. Prior to September quarter 2000 interstate transfers of UHT milk were also excluded. From September quarter 2000 onwards, interstate transfers of UHT milk have been included in their State of destination.

## BROKERS AND DEALERS RECEIVALS OF TAXABLE WOOL(a): All Series

Quarter	New South Wales	Victoria	Queensland	South Australia	Western Australia	Tasmania	Australia	% of total received by brokers
	tonnes	tonnes	tonnes	tonnes	tonnes	tonnes	tonnes	%
ORIGINAL								
<b>2000</b>								
September	55 071	38 369	13 679	25 616	33 409	3 706	<b>169 850</b>	85.8
December	51 624	53 391	6 689	26 382	31 788	4 517	<b>174 391</b>	80.7
<b>2001</b>								
March	41 236	32 811	8 243	20 375	33 581	1 859	<b>138 105</b>	82.3
June	34 951	23 763	12 112	17 366	16 697	2 627	<b>107 515</b>	81.3
September	51 757	36 536	10 740	22 732	26 646	2 290	<b>150 701</b>	83.1
December	44 041	45 617	4 852	24 462	26 579	4 921	<b>150 471</b>	79.6
SEASONALLY ADJUSTED								
<b>2000</b>								
September	46 651	35 776	10 544	21 300	29 941	3 356	<b>147 570</b>	..
December	44 338	35 265	9 931	21 605	28 719	3 137	<b>142 997</b>	..
<b>2001</b>								
March	47 476	42 292	9 647	24 362	29 611	2 509	<b>155 897</b>	..
June	44 396	37 405	10 301	23 502	25 845	3 354	<b>144 803</b>	..
September	44 044	34 134	8 310	18 905	24 086	2 142	<b>131 621</b>	..
December	37 846	30 312	7 159	20 140	24 052	3 420	<b>122 928</b>	..
TREND ESTIMATES								
<b>2000</b>								
September	46 921	37 358	10 431	22 215	31 168	3 309	<b>151 403</b>	..
December	46 285	37 822	10 127	22 641	29 478	3 107	<b>149 461</b>	..
<b>2001</b>								
March	45 803	38 753	9 974	23 099	27 983	2 848	<b>148 461</b>	..
June	44 932	37 700	9 473	22 403	26 422	2 770	<b>143 700</b>	..
September	42 585	34 466	8 574	20 814	24 711	2 836	<b>133 985</b>	..
December	39 915	31 185	7 577	19 580	23 619	2 962	<b>124 839</b>	..

(a) For more information refer to paragraphs 14 and 15 of the Explanatory Notes.

## LIVESTOCK PRODUCTS(a): Original

Financial year	New South Wales	Victoria	Queensland	South Australia	Western Australia	Tasmania	Australia
----------------	-----------------	----------	------------	-----------------	-------------------	----------	-----------

## WHOLE MILK INTAKE BY FACTORIES (ML)(b)

<b>1998-1999</b>	1 286	6 414	827	643	403	603	<b>10 175</b>
<b>1999-2000</b>	1 395	6 870	848	714	412	609	<b>10 847</b>
<b>2000-2001</b>	1 330	6 777	760	699	394	590	<b>10 549</b>

## MARKET MILK SALES BY FACTORIES (ML)(c)

<b>1998-1999</b>	578	442	382	185	191	48	<b>1 827</b>
<b>1999-2000</b>	566	440	383	185	190	48	<b>1 811</b>
<b>2000-2001</b>	587	457	393	199	192	50	<b>1 878</b>

## BROKERS AND DEALERS RECEIVALS OF TAXABLE WOOL (Tonnes)

<b>1998-1999</b>	181 712	153 981	51 873	89 450	145 515	16 232	<b>638 763</b>
<b>1999-2000</b>	190 398	152 890	45 661	91 795	143 445	17 331	<b>641 520</b>
<b>2000-2001</b>	182 882	148 333	40 723	89 739	115 475	12 709	<b>589 861</b>

(a) For more information refer to paragraph 13 to 15 of the Explanatory Notes.

(c) Australian total excludes Australian Capital Territory and Northern Territory. Prior to September quarter 2000 interstate transfers of UHT milk were also excluded. From September quarter 2000 onwards, interstate transfers of UHT milk have been included in their State of destination.

(b) New South Wales total includes Australian Capital Territory. Australian total excludes Northern Territory

Source: Original series data from Australian Dairy Corporation.

# WHAT IF...? REVISIONS TO TREND ESTIMATES

## EFFECT OF NEW SEASONALLY ADJUSTED ESTIMATES ON TREND ESTIMATES

Each time new seasonally adjusted estimates become available, trend estimates are revised (see paragraphs 20 and 21 of the Explanatory Notes).

### TREND REVISIONS

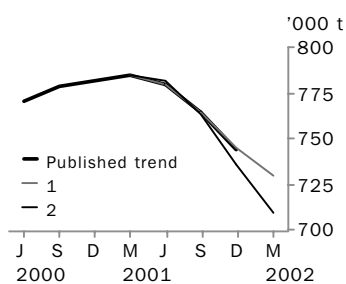
The graphs and tables which follow present the effect of two possible new seasonally adjusted estimates on the previous trend estimates:

**1** The March Quarter 2002 seasonally adjusted estimate is higher than the December Quarter 2001 estimate by the percentage shown.

**2** The March Quarter 2002 seasonally adjusted estimate is lower than the December Quarter 2001 estimate by the percentage shown.

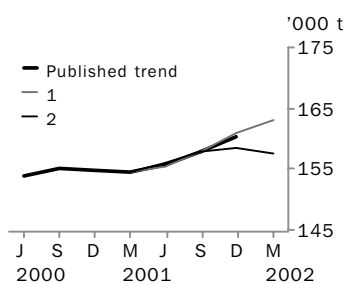
These percentages were chosen because they represent the average absolute quarterly percentage change for these series over the last ten years.

### RED MEAT PRODUCTION



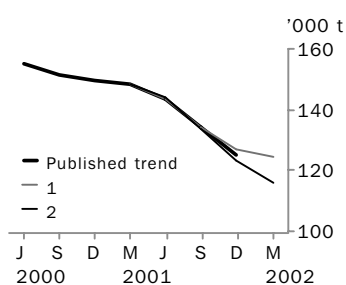
	TREND AS PUBLISHED		WHAT IF NEXT QUARTER'S SEASONALLY ADJUSTED ESTIMATE:			
	number	% change	<b>1</b> <i>rises by 3% on Dec Qtr 2001</i>		<b>2</b> <i>falls by 3% on Dec Qtr 2001</i>	
	number	% change	number	% change	number	% change
Dec Qtr 2000	781 987	0.4	781 986	0.4	781 986	0.4
Mar Qtr 2001	784 946	0.4	784 945	0.4	784 945	0.4
Jun Qtr 2001	779 391	-0.7	779 618	-0.7	781 489	-0.4
Sep Qtr 2001	764 183	-2.0	764 185	-2.0	763 465	-2.3
Dec Qtr 2001	743 820	-2.7	744 864	-2.5	735 820	-3.6
Mar Qtr 2002	—	—	729 606	-2.0	709 521	-3.6

### CHICKEN MEAT PRODUCTION



	TREND AS PUBLISHED		WHAT IF NEXT QUARTER'S SEASONALLY ADJUSTED ESTIMATE:			
	number	% change	<b>1</b> <i>rises by 4% on Dec Qtr 2001</i>		<b>2</b> <i>falls by 4% on Dec Qtr 2001</i>	
	number	% change	number	% change	number	% change
Dec Qtr 2000	154 851	-0.1	154 850	-0.1	154 850	-0.1
Mar Qtr 2001	154 480	-0.2	154 480	-0.2	154 480	-0.2
Jun Qtr 2001	155 687	0.8	155 426	0.6	155 915	0.9
Sep Qtr 2001	157 917	1.4	157 991	1.7	157 821	1.2
Dec Qtr 2001	160 393	1.6	160 849	1.8	158 501	0.4
Mar Qtr 2002	—	—	163 053	1.4	157 482	-0.6

### WOOL RECEIVALS



	TREND AS PUBLISHED		WHAT IF NEXT QUARTER'S SEASONALLY ADJUSTED ESTIMATE:			
	number	% change	<b>1</b> <i>rises by 9% on Dec Qtr 2001</i>		<b>2</b> <i>falls by 9% on Dec Qtr 2001</i>	
	number	% change	number	% change	number	% change
Dec Qtr 2000	149 461	-1.3	149 461	-1.3	149 461	-1.3
Mar Qtr 2001	148 461	-0.7	148 457	-0.7	148 457	-0.7
Jun Qtr 2001	143 700	-3.2	143 517	-3.3	144 325	-2.8
Sep Qtr 2001	133 985	-6.8	134 198	-6.5	133 904	-7.2
Dec Qtr 2001	124 839	-6.8	127 242	-5.2	123 344	-7.9
Mar Qtr 2002	—	—	124 787	-1.9	115 820	-6.1



# WHAT IF...? REVISIONS TO TREND ESTIMATES

## EFFECT OF NEW SEASONALLY ADJUSTED ESTIMATES ON TREND ESTIMATES

Readers should exercise care when interpreting trend estimates. The last three trend estimates, in particular, are likely to be revised when new seasonally adjusted estimates become available.

### TREND REVISIONS

The graph and tables which follow present the effect of two possible scenarios on the previous trend estimates:

**1** The December Quarter 2001 seasonally adjusted estimate is higher than the September Quarter 2001 estimate by:

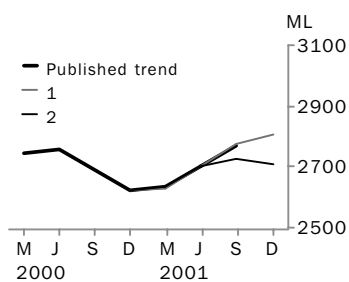
- +2% for whole milk intake by factories.

**2** The December Quarter 2001 seasonally adjusted estimate is lower than the September Quarter 2001 estimate by:

- 2% for whole milk intake by factories.

These percentages were chosen because they represent the average absolute quarterly percentage change for these series over the last ten years.

### WHOLE MILK INTAKE BY FACTORIES



Quarter	Trend as Published	% change
Sep Qtr 2000	2 691	-2.5
Dec Qtr 2000	2 621	-2.6
Mar Qtr 2001	2 635	0.5
Jun Qtr 2001	2 701	2.5
Sep Qtr 2001	2 769	2.5
Dec Qtr 2001	—	—

### WHAT IF NEXT QUARTER'S SEASONALLY ADJUSTED ESTIMATE:

TREND AS PUBLISHED		<b>1</b> <i>rises by 2% on Sep Qtr 2001</i>		<b>2</b> <i>falls by 2% on Sep Qtr 2001</i>	
number	% change	number	% change	number	% change
2 691	-2.5	2 691	-2.5	2 691	-2.5
2 621	-2.6	2 622	-2.6	2 622	-2.6
2 635	0.5	2 628	0.2	2 637	0.6
2 701	2.5	2 703	2.9	2 700	2.4
2 769	2.5	2 773	2.6	2 728	1.0
—	—	2 808	1.3	2 708	-0.7

## EXPLANATORY NOTES

### INTRODUCTION

- 1** This publication contains information on livestock slaughterings, meat production, exports of live sheep and live cattle, exports of fresh, frozen and processed meat, and whole milk intake by factories, market milk sales by factories and receivals of taxable wool by wool brokers and dealers.
- 2** The figures shown in this publication have been revised where necessary and as a consequence may not agree with similar data shown in previous publications.
- 3** Where figures have been rounded, discrepancies may occur between sums of the component items and totals.
- 4** Unless indicated otherwise, Australian totals include data for all States and both Territories.

### LIVESTOCK SLAUGHTERINGS AND MEAT PRODUCTION

- 5** The statistics on slaughterings for red meat production are based on a monthly collection from abattoirs and other major slaughtering establishments and include estimates of animals slaughtered on farms and by country butchers and other small slaughtering establishments.
- 6** Red meat is shown in carcass weight and excludes offal.
- 7** Care should be taken when using this information as the figures only relate to slaughterings for human consumption and do not include animals condemned, slaughtered for petfood or those killed for boiling down.
- 8** Poultry slaughterings and meat produced statistics have been compiled from returns supplied by commercial poultry slaughtering establishments and comprise boilers, fryers and roasters. Many small producers are excluded from the collection; however, the statistics represent a high level of coverage. Tasmanian and Northern Territory data are excluded from the Australian total.
- 9** Chicken meat is shown in dressed weight of whole birds, pieces and giblets. Some slaughterings and meat production statistics for 'Ducks and Drakes' and 'Other Fowls and Turkeys' are available by contacting the ABS on Hobart 03 6222 5974 or by writing to GPO Box 66a, Hobart Tasmania 7001 (Attention: Agriculture Section).

### EXPORTS OF FRESH, FROZEN AND PROCESSED MEAT

- 10** Table 20 shows exports of fresh, frozen and processed meat, excluding offal. International trade statistics are compiled by the ABS from information submitted by exporters and importers or their agents to the Australian Customs Service. Factors can be applied to beef, veal, mutton and lamb bone-out figures to derive bone-in carcass weight which, when added to bone-in figures, shows total exports in carcass weight. The factor for beef and veal is 1.5 and for mutton and lamb, 2.0. This information is sourced from Department of Agriculture, Fisheries and Forestry—Australia.
- 11** Beef also includes buffalo meat. Bacon and ham shown is the cured carcass weight of smoked or cooked bacon and ham. It also includes the stated net weight of packs of canned bacon and ham. Canned meat is shown as the canned weight and excludes canned bacon and ham.

### LIVE SHEEP AND CATTLE EXPORTS

- 12** Table 21 contains statistics of the number of live sheep and cattle exported, the gross weight, gross value and unit value. The unit value is obtained by dividing the gross value by the number of animals exported. Sheep and cattle exported for breeding are excluded.

## EXPLANATORY NOTES

MILK	<p><b>13</b> Tables 2, 22, 23 and 25 contain statistics collected by the Australian Dairy Corporation (ADC). Whole milk intake by factories includes the whole milk equivalent of farm cream intake. Market milk sales includes white, flavoured, high and low fat milk and UHT milk.</p>
WOOL RECEIVALS	<p><b>14</b> The statistics in tables 2, 24 and 25 show the amount of taxable wool received by brokers and purchased by dealers from wool producers. It excludes wool received by brokers on which tax has already been paid by other dealers (private buyers) or brokers.</p> <p><b>15</b> The information shown is on the basis of the State in which wool has actually been received and does not necessarily reflect the production of wool in that State.</p>
SEASONAL ADJUSTMENT	<p><b>16</b> Seasonal adjustment is a means of removing the estimated effects of normal seasonal variation from the series so that the effects of other influences can be more clearly recognised.</p> <p><b>17</b> In the seasonal adjustment of the livestock estimates, account has been taken of both normal seasonal factors and 'trading-day' effects, where significant, (arising from the varying length of each quarter and the varying numbers of Sundays, Mondays, Tuesdays etc. in the quarter). Adjustments are also made for the effects of change in the date of Easter holidays, again, where significant. Seasonal adjustment does not remove from the series the effect of irregular influences (e.g. abnormal weather, industrial disputes).</p> <p><b>18</b> The State component series have been seasonally adjusted independently. Therefore, the adjusted components may not add to the Australian Group totals.</p> <p><b>19</b> As happens with all seasonally adjusted series, the seasonal factors are reviewed annually to take account of each additional year's data.</p>
TREND ESTIMATES	<p><b>20</b> A trend estimate is obtained by reducing the irregular component from the seasonally adjusted series. In this publication trend estimates are generally derived by applying a seven term Henderson moving average to the seasonally adjusted series. The seven term Henderson, (like all Henderson averages) is symmetric, but as the end of a time series is approached, asymmetric forms of the average are applied. Unlike the weights of the standard seven term Henderson moving average, the weights employed here have been tailored to suit the particular characteristics of individual series. While the asymmetric weights enable the trend to be calculated for recent quarters, it does result in revisions to the estimates for the most recent three quarters as additional observations become available. Revisions of trend estimates will also occur with revisions to the original data and re-estimation of seasonal factors.</p> <p><b>21</b> Sensitivity analysis indicates the potential magnitude and direction of revisions created to the last three estimates. It aims to show how a specified movement in the seasonally adjusted data in the next period will affect the trend path of the time series. By showing how sensitive the trend estimates are to the addition of new data, the analysis provides information which can be used in the assessment of the trend's stability.</p> <p><b>22</b> For further information, see <i>Information Paper: A Guide to Interpreting Time Series — Monitoring 'Trends', an Overview</i> (Cat. no. 1348.0) or contact the Assistant Director, Time Series Analysis on Canberra 02 6252 6345.</p>

## EXPLANATORY NOTES

---

### RELATED PUBLICATIONS

**23** Current publications produced by the ABS are listed in the *Catalogue of Publications and Products, Australia* (Cat. no. 1101.0). The ABS also issues, on Tuesdays and Fridays, a *Release Advice* (Cat. no. 1105.0) which lists publications to be released in the next few days. The Catalogue and Release Advice are available from any ABS office.

### GENERAL ACKNOWLEDGMENT

ABS publications draw extensively on information provided freely by individuals, businesses, governments and other organisations. Their continued cooperation is very much appreciated. Without it, the wide range of statistics published by the ABS would not be available. Information received by the ABS is treated in strict confidence as required by the *Census and Statistics Act 1905*.

### SYMBOLS AND OTHER USAGES

billion	thousand million
ML	million litres
n.y.a.	not yet available
n.p.	not published
p	preliminary
t	tonnes
..	not applicable







## FOR MORE INFORMATION...

- INTERNET* **www.abs.gov.au** the ABS web site is the best place to start for access to summary data from our latest publications, information about the ABS, advice about upcoming releases, our catalogue, and Australia Now—a statistical profile.
- LIBRARY* A range of ABS publications is available from public and tertiary libraries Australia-wide. Contact your nearest library to determine whether it has the ABS statistics you require, or visit our web site for a list of libraries.
- CPI INFOLINE* For current and historical Consumer Price Index data, call 1902 981 074 (call cost 77c per minute).
- DIAL-A-STATISTIC* For the latest figures for National Accounts, Balance of Payments, Labour Force, Average Weekly Earnings, Estimated Resident Population and the Consumer Price Index call 1900 986 400 (call cost 77c per minute).

## INFORMATION SERVICE

Data which have been published and can be provided within five minutes are free of charge. Our information consultants can also help you to access the full range of ABS information—ABS user-pays services can be tailored to your needs, time frame and budget. Publications may be purchased. Specialists are on hand to help you with analytical or methodological advice.

- PHONE* **1300 135 070**
- EMAIL* **client.services@abs.gov.au**
- FAX* 1300 135 211
- POST* Client Services, ABS, GPO Box 796, Sydney 1041

## WHY NOT SUBSCRIBE?

ABS subscription services provide regular, convenient and prompt deliveries of ABS publications and products as they are released. Email delivery of monthly and quarterly publications is available.

- PHONE* 1300 366 323
- EMAIL* subscriptions@abs.gov.au
- FAX* 03 9615 7848
- POST* Subscription Services, ABS, GPO Box 2796Y, Melbourne 3001



2721500012017  
ISSN 0728-4047

RRP \$22.00